

Cylinder accessories

Shown: Cylinder accessories



Swing cylinders
Work supports

Linear cylinders

99_087

▶ These accessories are provided so that you can effectively position, mount and actuate Enerpac hydraulic cylinders according to your specific fixturing or production applications.

For optimum mounting and fixture flexibility

...to match specific applications

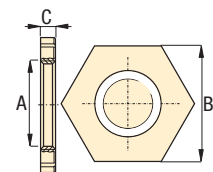
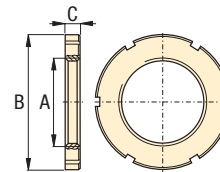
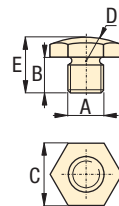
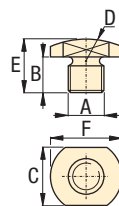
- **Contact bolts**
Allow cylinders to act as a datum point in your clamping applications, and protect the piston when cylinders are used for pushing applications
- **Cylindrical flange nuts**
For mounting threaded body cylinders in any position
- **Mounting brackets**
For bolting cylinders to suit the application

BS-21, -41, -42, -61, -62, -82

other BS models

all others

FN-121, 201, 251



Product dimensions in inches [D]

A thread	Model number	B	C	D	E	F
▼ Spherical contact bolts						
#6-32 UN	BS-21	.20	.18	.18	.45	.25
#8-32 UN	BS-41	.28	.25	.24	.56	.31
M4 x 0,7	BS-42	.20	.24	.39	.31	.31
.250-28 UN	BS-61	.25	.35	.59	.39	.47
M6 x 1,0	BS-62	.25	.35	.59	.39	.47
.313-24 UN	BS-81	.27	.56	.79	.28	-
M8 x 1,25	BS-82	.25	.51	.79	.41	.63
.375-16 UN	BS-91	.50	.50	.50	.75	-
.500-13 UN	BS-101	.49	.87	1.18	.73	-
M10 x 1,5	BS-102	.25	.67	.91	.43	-
M16 x 2,0	BS-162	.47	.87	.87	.94	-
M20 x 2,5	BS-202	.47	.94	.87	.94	-

A thread	Model number	B	C
▼ Jam nuts			
0.500-20 UN	FN-121	0.75	0.31
M12 x 1,5	FN-122	1.10	0.24
0.750-16 UN	FN-201	1.13	0.42
M20 x 1,5	FN-202	1.12	0.42
1.000-12 UN	FN-251	1.50	0.55
1.125-16 UN	FN-281	1.75	0.38
M28 x 1,5	FN-282	1.97	0.39
1.250-16 UN	FN-301	1.97	0.39
M30 x 1,5	FN-302	1.97	0.39
1.313-16 UN	FN-331	1.88	0.25
1.375-18 UN	FN-351	1.88	0.25
M35 x 1,5	FN-352	2.17	0.43
1.625-16 UN	FN-421	2.25	0.33
M42 x 1,5	FN-422	2.44	0.47
1.875-16 UN	FN-481	2.50	0.50
M48 x 1,5	FN-482	2.95	0.51
2.125-16 UN	FN-551	3.13	0.38
M55 x 1,5	FN-552	3.15	0.51
2.500-16 UN	FN-651	3.25	0.38
M65 x 1,5	FN-652	3.74	0.55
3.125-16 UN	FN-801	4.13	0.50
M80 x 2,0	FN-802	4.53	0.63

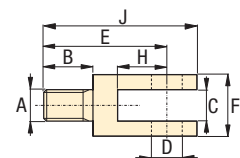
■ Enerpac worksupport locked in position using an FN series self-locking flange nut.



99_093

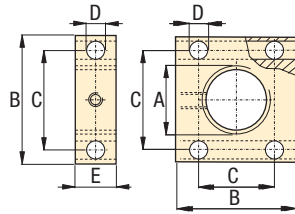
Product dimensions in inches [D]

A thread	Model number	B	C	D	E	F	H	J
▼ Yoke								
.312-24 UN	Y-3121	.50	.31	.31	1.25	.63	.50	1.88

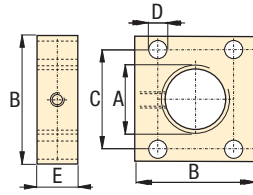




MF and AW-51 models



other AW models

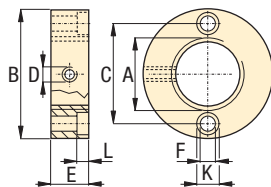


- E** Accesorios de cilindro
- F** Accessoires pour vérins
- D** Zubehör für Zylinder

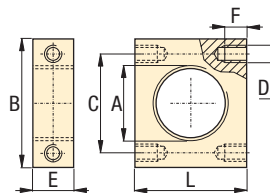
Product dimensions in inches [$\Delta \oplus$]

A thread	Model number	B	C	D ø	E
▼ Mounting flanges – Rectangular					
1.375-18 UN	AW-5	1.70	1.34	0.27	0.50
1.500-16 UN	AW-51	2.75	2.12	.41	1.00
1.875-16 UN	AW-89	2.25	1.77	0.34	1.00
2.500-16 UN	AW-19	3.25	2.17	0.34	1.00
3.125-16 UN	AW-90	3.75x4.75	2.38x3.50	0.64	1.25
0.500-20 UN	MF-121	1.50	1.00	0.25	1.00
M12 x 1,5	MF-122	1.57	0.98	0.25	0.98
0.750-16 UN	MF-201	2.25	1.50	0.38	1.50
M20 x 1,5	MF-202	2.56	1.75	0.40	1.57
1.000-12 UN	MF-251	2.50	1.75	0.38	1.50
1.125-16 UN	MF-281	2.75	2.00	0.38	1.50
M28 x 1,5	MF-282	2.95	2.00	0.40	1.57
1.313-16 UN	MF-331	3.00	2.25	0.38	1.50
1.375-18 UN	MF-351	3.00	2.25	0.38	1.50
M35 x 1,5	MF-352	3.15	2.25	0.40	1.57
1.625-16 UN	MF-421	3.25	2.50	0.38	1.50
M42 x 1,5	MF-422	3.54	2.50	0.40	1.57
1.875-16 UN	MF-481	3.50	2.75	0.38	1.50
M48 x 1,5	MF-482	3.74	2.75	0.40	1.57
2.125-16 UN	MF-551	4.00	3.00	0.44	1.75
M55 x 1,5	MF-552	4.33	3.25	0.44	1.75
2.500-16 UN	MF-651	4.50	3.50	0.44	1.75
M65 x 1,5	MF-652	4.53	3.50	0.44	1.75
3.125-16 UN	MF-801	5.00	4.00	0.44	1.75
M80 x 2,0	MF-802	5.31	4.25	0.44	1.75

AW-53, -121



AW-102



Product dimensions in inches [$\Delta \oplus$]

A thread	Model number	B	C	D thread	E	F	K	L
▼ Mounting flanges – Cylindrical								
1.500-16 UN	AW-53	2.76	2.25	.250-20 UN	.75	.28	.41	.31
2.750-16 UN	AW-121	4.50	3.00	.250-20 UN	.75	.34	.50	.38
▼ Mounting flanges – Rectangular								
2.250-14 UN	AW-102	3.25	3.00	.437-20 UN	1.25	.62	–	4.00