

Clamp arms for swing cylinders

Shown: CAL-122, CAS-121

Swing cylinders
Work supports



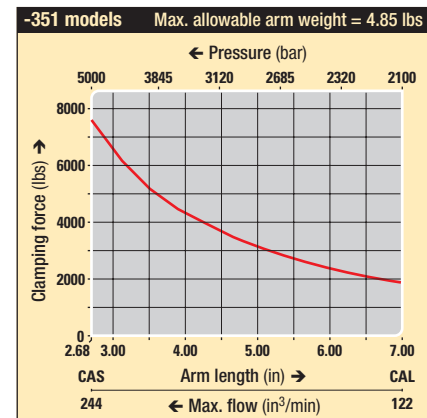
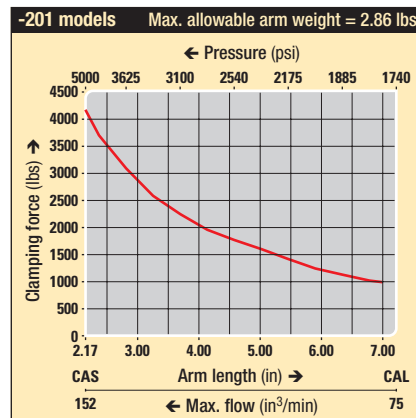
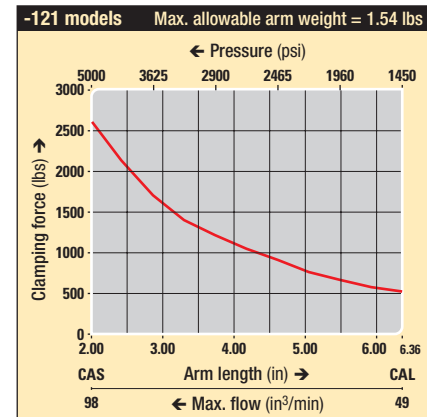
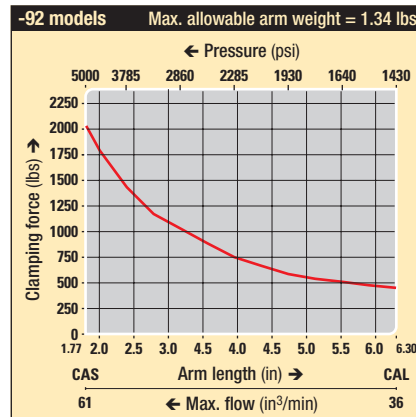
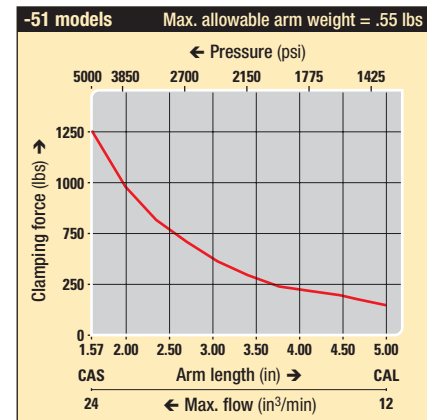
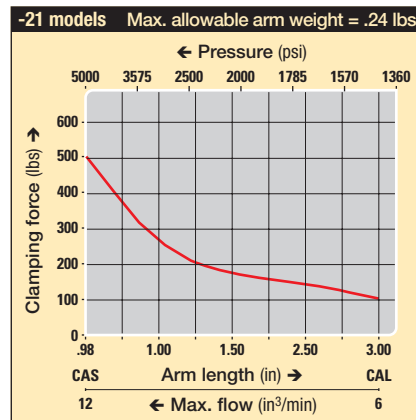
Patented Design

- Easy and precise location of the clamp arm in any position
- Arm can be easily installed and fastened while the cylinder is mounted in the fixture to allow exact arm positioning
- Vise not required for fastening arms

Pressure vs clamping force

The use of different length clamp arms requires reduction in applied pressure and resulting clamp force. The charts below show this relationship.

► Enerpac's patented clamp arm design attaches to the hydraulic swing cylinder, allowing parts to be clamped at various distances from the hydraulic cylinder. Clamp arms are available in a variety of lengths, or you can use custom machining dimensions to create your own clamp arm configuration.



Ordering rotation limiting spacers

BUILD YOUR PART NUMBER:

SP	186
Clamp force	Angle

02 = 500 lbs	30
05 = 1250 lbs	45
09 = 2025 lbs	60
12 = 2600 lbs	
20 = 4200 lbs	
35 = 7600 lbs	

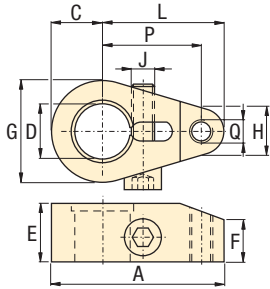
Example:

SP-12 45-186 converts a 2600 lb. swing cylinder to 45 degree rotation.

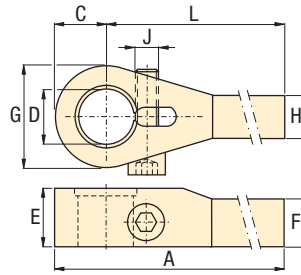
The addition of this spacer requires minor disassembly of the clamp. If you are uncomfortable doing this, please contact an authorized Enerpac Service Center.



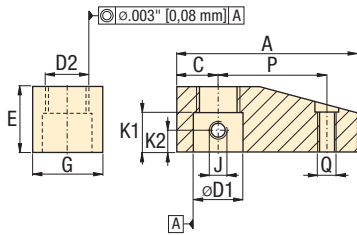
CAS models Standard clamp arms



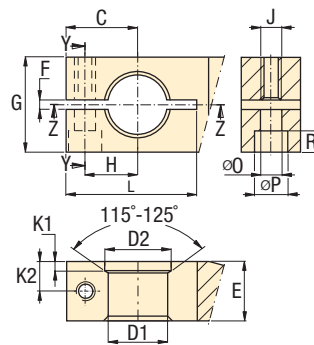
CAL models Long clamp arms



CA models Positive locking



Custom design (for SU, SL, ST and SC models only)



Dimensions in inches [± 0.003 / 0.08 mm]

Clamp. force lbs	Model number	A	C	D	E	F	G	H	J	L	P	Q	lbs
------------------	--------------	---	---	---	---	---	---	---	---	---	---	---	-----

▼ Standard clamp arms

500	CAS-21	1.60	.38	.392-.396	.63	.40	.76	.50	.250-28 UNF	1.22	.98	.250-20	.1
1250	CAS-51	2.39	.50	.628-.632	.75	.45	1.00	.62	.312-24 UNF	1.89	1.57	.312-18	.8
2025	CAS-92	2.99	.79	.982-.986	.98	.63	1.57	.89	M10x1,25	2.20	1.77	M10x1,5	.7
2600	CAS-121	3.13	.70	.873-.877	1.19	.63	1.39	.82	.375-24 UNF	2.43	2.00	.375-16	1.0
4200	CAS-201	3.71	.95	1.257-1.261	1.18	.82	1.90	1.20	.500-20 UNF	2.76	2.17	.500-13	1.0
7600	CAS-351	4.65	1.38	1.494-1.498	1.58	1.16	2.76	1.24	.625-18 UNF	3.27	2.68	.625-11	3.0

▼ Long clamp arms

500	CAL-22	2.85	.30	.392-.396	.63	.40	.76	.44	M6x1	3.25	-	-	.2
1250	CAL-52	5.81	.50	.628-.632	.75	.45	1.00	.55	M8x1	5.31	-	-	1.0
2025	CAL-92	7.09	.79	.982-.986	.98	.63	1.57	.71	M10x1,25	6.30	-	-	1.2
2600	CAL-122	7.06	.70	.873-.877	1.19	.63	1.39	.72	M10x1,5	6.36	-	-	1.5
4200	CAL-202	7.95	.95	1.257-1.261	1.18	.82	1.90	1.00	M12x1,25	7.00	-	-	1.5
7600	CAL-352	8.47	1.38	1.494-1.498	1.58	1.33	2.76	1.18	M16x1,50	7.09	-	-	4.2

Clamp. force lbs	Model number	A	C	D1	D2	E	G	J	K1	K2	P	Q	lbs
------------------	--------------	---	---	----	----	---	---	---	----	----	---	---	-----

▼ Positive locking clamp arms

1000	CA-540	2.84	.71	.749-.750	.63-18	1.18	1.26	.313-24	.75	.39	1.57	.313-24	1.2
2000	CA-1050	3.27	.75	.878-.879	.75-16	1.18	1.38	.313-24	.71	.39	1.97	.375-24	1.2
8500	CA-3070	5.04	1.38	1.377-1.378	1.25-12	1.85	2.32	.313-24	1.26	.67	2.76	.625-18	5.0

Clamp. force lbs	C	D1 ¹⁾	D2	E	F	G	H	J	K1	K2	L	O	P	R
------------------	---	------------------	----	---	---	---	---	---	----	----	---	---	---	---

▼ Custom design clamp arms ²⁾ (Recommended machining dimensions)

500	.61	.393-.394	.495-.497	.63	.06-.12	.79	.37	M5x0,8	.122-.138	.33	.98-1.10	.22	.49	.22
1250	.79	.623-.631	.727-.729	.75	.06-.12	1.18	.53	M6x1,0	.161-.177	.39	1.38-1.57	.26	.43	.26
2025	1.18	.984-.985	1.096-1.100	.98	.06-.12	1.57	.87	M8x1,25	.154-.165	.49	2.17-2.36	.35	.55	.35
2600	1.12	.8756-.8766	1.002-1.006	1.18	.06-.12	1.38	.70	.375-24 UNF	.272-.287	.50	2.05-2.25	.39	.63	.31
4200	1.38	1.260-1.261	1.398-1.402	1.18	.06-.12	2.36	.98	M10x1,5	.201-.217	.59	2.44-2.64	.43	.67	.43
7600	1.57	1.496-1.497	1.634-1.638	1.57	.06-.12	2.76	1.18	M10x1,5	.193-.209	.79	3.15-3.35	.43	.67	.43

¹⁾ Surface roughness for D1 should be 63 micro inches.

²⁾ Not for use with positive locking cylinders.

Force: 500 - 8500 lbs

Stroke: 500 - 5000 psi

- E** Brazos de amarre
- F** Bras de bridage
- D** Spannarme

Options

Gauges

154 ▶



Flow control valves

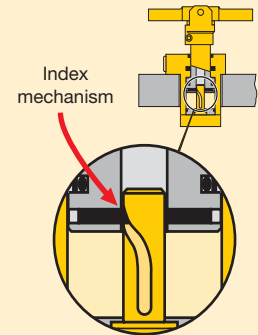
138 ▶



Important

Do not exceed maximum oil flow.

If flow rates are exceeded, swing cylinder indexing mechanism may be permanently damaged.



When designing custom clamp arms, the flow rates must be further reduced. This rating should be in proportion to the mass and the center of gravity of the clamp arm.

Example:

If the mass of the arm is twice that of the long arm, flow rates must be reduced by 50%.

Swing cylinders
Work supports

Linear cylinders

Power sources

Valves

System components

Yellow pages