

Shown: PRV-1



## PRV series

These valves regulate system pressure for all subsequent valves, according to the adjusted pressure. Maintains a constant pressure in a secondary circuit. Includes a check valve that prevents pressure drop on secondary side.

### Application

Used when a hydraulic supply with a higher pressure (primary side) must also be used for another circuit with a lower pressure (secondary circuit). PRV-1 can be stack built between VP-series valves.

■ PRV-1 connected with remote manifold WM-10.



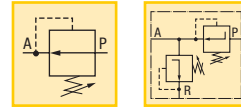
## Precise control of hydraulic pressure

- Stackbuilding with VP series modular valves
- Stackable for multiple pressures on one valve stack assembly
- Tool adjustable knob can be locked
- Precise control of pressure

Pressure: 5000 psi

Flow: 417 in<sup>3</sup>/min

- Ⓔ Válv. reguladora de presión
- Ⓕ Valve de pression réglable
- Ⓖ Druckreduzierventil



## Options

### VP-Modular valves

122 ▶



### Pressure switches

123 ▶

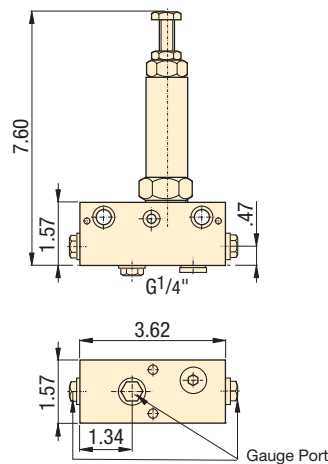


### Tie rod kits

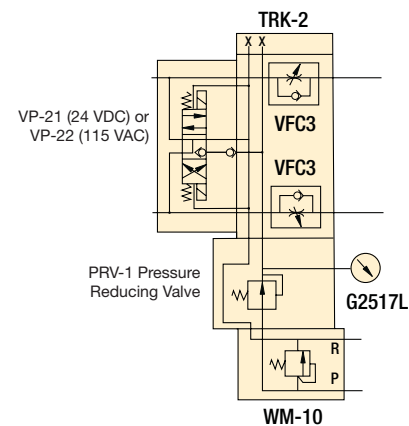
125 ▶



### PRV-1, PRV-5



### Valve stacking example



## Product selection

Mounting style	Adjustable pressure range	Maximum pressure	Model number	Oil ports	Maximum oil flow	
	psi	psi		BSPP	in <sup>3</sup> /min	lbs
VP-series	435 - 4350	5000	<b>PRV-1</b>	G1/4"	427	3.5
VP-series	75 - 2000	5000	<b>PRV-5</b>	G1/4"	427	3.5