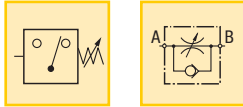


Pressure: 5000 psi

Flow: 427 in³/min @ 5000 psi

Voltage: 115 VAC, 24 VDC

- E** Presostatos
- F** Pressostats
- D** Druckschalter



To control your hydraulic system

- Mounts directly into VP-series modular valves
- In-line installation
- Cartridge type flow control valve and pressure switches can be manifold mounted for remote use
- Lockable adjustment screw on PSCK models

Options

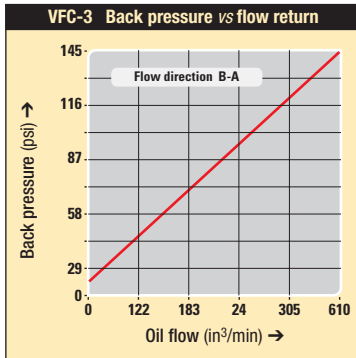
PB-1 Auxiliary block

125 ▶

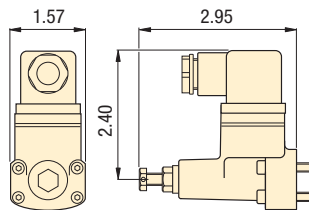


Pressure reducing valves

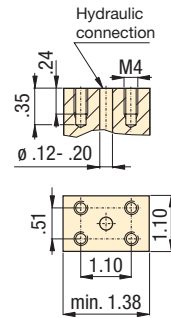
124/139 ▶



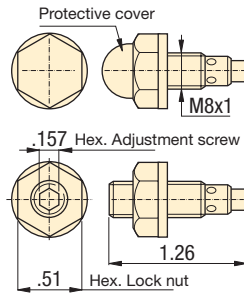
PSCK-8, 9



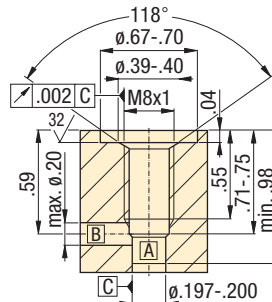
mounting dim.



VFC-3



VFC-3 mounting dimensions



Product selection

Solenoid voltage @ current	Model number	Hydraulic scheme	Pressure range	Deadband	Maximum oil flow
at 50/60 Hz			psi	psi	in ³ /min
▼ Pressure switch					
24 VDC @ 2 A	PSCK-8		1450 - 5000	261 - 501	427
115 VAC @ 2 A					
▼ Pressure switch					
24 VDC @ 2 A	PSCK-9		290 - 3045	87 - 218	427
115 VAC @ 2 A					
▼ Flow control valve					
screw-in	VFC-3		0-5000	-	427
throttle valve					

Shown: PSCK-8, VFC-3



PSCK-8, 9

Adjustable pressure switches will open or close electrical contacts when the desired pressure value is reached.

Application

To open or close an electric circuit when a preset pressure value is reached. The electrical circuit is used to control further working cycles, such as actuating control valves or to terminate a working cycle. Directly mounted into Enerpac VP-series valves.

VFC-3

Screw-in throttle type valve to control the amount of oil flow to the hydraulic cylinder.

Application

Used to control cylinder speed in hydraulic circuits. Directly mounted into Enerpac VP-series valves or custom made manifolds for remote applications.

■ PSCK-8 and VFC-3 directly mounted on VP-valves.

