

Shown: VP-12



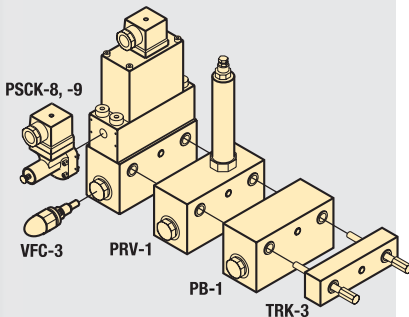
VP-series

Solenoid directional valves control the direction of the oil flow to each cylinder port.

Application

With the use of a -12 manifold, these valves allow quick and easy assembly of hydraulic control valves on your Enerpac ZW-series pump. For remote mounting of these valves use a WM-10 manifold.

VP-series



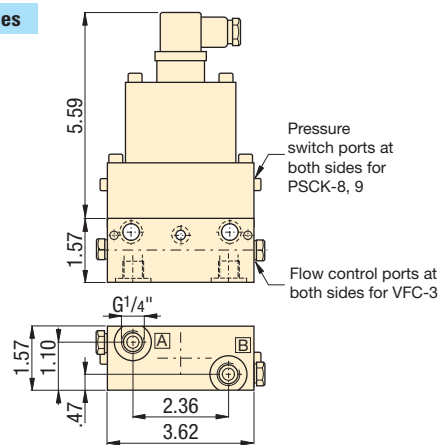
■ Enerpac VP-series valves mounted on -12 manifold, mounted on a ZW-series workholding pump.



Solenoid directional valves

- Dual poppet valve design for zero internal leakage
- Inlet check-valve standard
- High cycle switching
- Stackable to 8 valve stations high
- 250-5000 psi operational pressure
- Oil flow capacity 427 in³/min @ 5000 psi
- Oil flow capacity 915 in³/min @ 0 psi
- G1/4" oil connections and integrated filtration
- Multiple voltage options

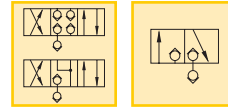
VP series



Pressure: 5000 psi

Max. Flow: 915 in³/min

- Ⓔ Válvulas de control
- Ⓕ Electro distributeurs
- Ⓖ Wegesitzventile



Options

WM-10 series manifolds

125 ▶

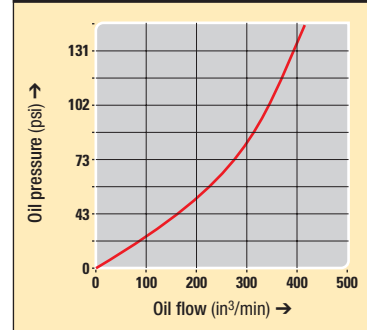


Tie rod kits

125 ▶



Oil flow vs pressure drop



Product selection

Voltage @ current	Model number	Flow path	Used with cylinder(s)
at 50/60 Hz			
▼ 4/3 Closed center			
24 VDC @ 1.13 A	VP-11		1x Dbl-act. / 2x Sgl-act.
110 VAC @ 500 mA	VP-12		1x Dbl-act. / 2x Sgl-act.
▼ 4/3 Float center			
24 VDC @ 1.13 A	VP-21		1x Dbl-act. / 2x Sgl-act.
110 VAC @ 500 mA	VP-22		1x Dbl-act. / 2x Sgl-act.
▼ 3/2 Normally closed			
24 VDC @ 1.13 A	VP-31		1x Dbl-act. / 2x Sgl-act.
110 VAC @ 500 mA	VP-32		1x Dbl-act. / 2x Sgl-act.
▼ 3/2 Normally open			
24 VDC @ 1.13 A	VP-41		1x Dbl-act. / 2x Sgl-act.
110 VAC @ 500 mA	VP-42		1x Dbl-act. / 2x Sgl-act.
▼ 3/2 1 port normally closed, 1 port normally open			
24 VDC @ 1.13 A	VP-51		1x Dbl-act. / 2x Sgl-act.
110 VAC @ 500 mA	VP-52		1x Dbl-act. / 2x Sgl-act.

Note: DIN 43650 electrical connector included. Valve weight 6.5 lbs (3,0 kg).