

▼ Shown from left to right: A-220, A-330 and A-258



The Standard In Workshop Tools



Push Pin A-183

For applications requiring precision pressing, such as shaft removal and insertion. This attachment fits 10 ton cylinders and requires the use of a threaded adaptor saddle (A-13).



Smooth Saddle A-185

For pressing applications of delicate parts, such as aluminum castings, this saddle decreases surface marks during the pressing application. Requires 10 ton cylinder and threaded adaptor saddle (A-13).

Arbor Press

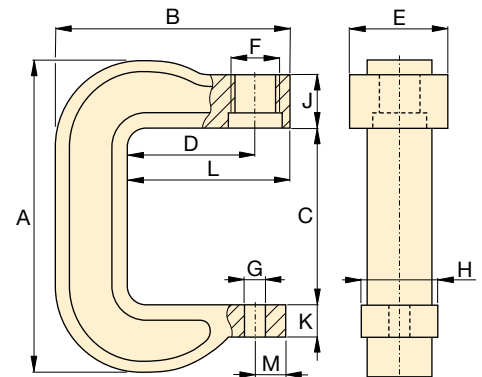
- Foot mounting holes for horizontal or vertical positioning
- Machined work surfaces for easier fixturing
- Slotted back to simplify loading and unloading of longer parts

C-Clamp Press

- 5, 10 and 20 ton capacity
- Operational in all positions

Bench Frame Press

- Cylinder mounting adaptor allows lateral positioning along rails
- Mounting holes for easy mounting to fixed surface



C-Clamp Press A-205, A-210, A-220



◀ A-310 Arbor Press used for compacting powder at 10 tons.

Press Type	Press Capacity (tons)	Maximum Vertical Daylight (in)	Maximum Bed Width (in)	Cylinder Series Number*	Press Model Number	Weight (lbs)
Arbor	10 (89)	228	134	RC-10-x	A-310	28
	30 (267)	260	177	RC-30-x	A-330	100
C-Clamp	5 (45)	165	50	RC-5-x	A-205	6
	10 (89)	228	57	RC-10-x	A-210	17
	20 (178)	304	69	**	A-220	38
Bench	10 (89)	419	381	-	A-258	47
	10 (89)	419	381	RC-1010	IPA-1022***	64
	10 (89)	419	381	RC-1010	IPH-1040***	61

* Requires RC cylinder listed, see page 7 for specifications.

** Requires RC-25 ton cylinder, limited to 20 tons.

*** Complete set includes cylinder and pump.

Arbor, C-Clamp and Bench Frame Presses

▼ A perfect example of the force and versatility of the Enerpac A-220 C-Clamp press.



A IP Series

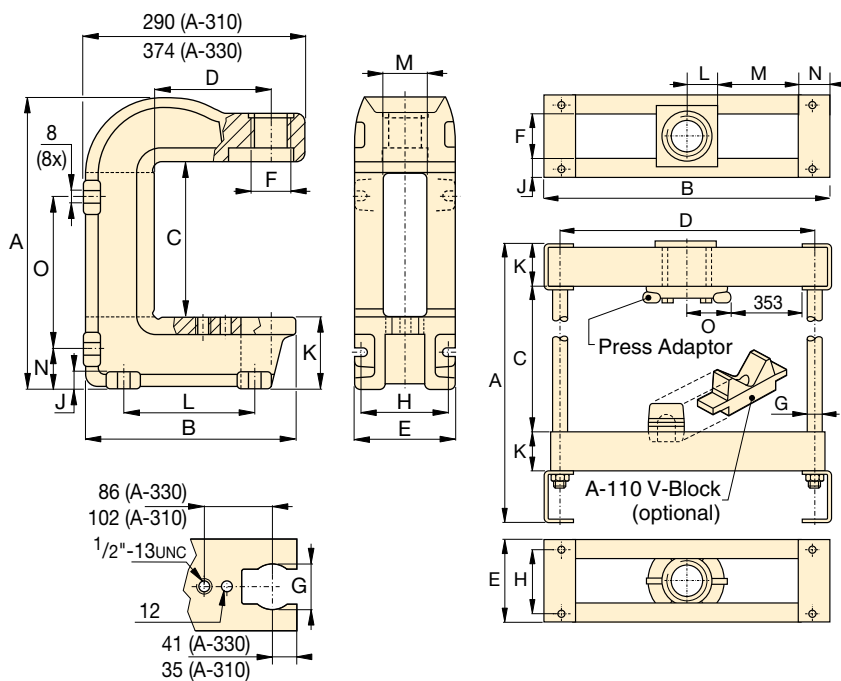


Capacity:
5-30 ton

Maximum Daylight and Width:
15.38 and 15.00 inches

Mounting Capabilities:
Fixed or Portable

Maximum Operating Pressure:
10,000 psi



For high-cycle production applications, C-Clamp and Arbor presses should be limited in their capacity.

Consult Enerpac Technical Services for specific application details.



Enerpac cylinders and power sources for C-Clamp and Arbor presses must be ordered separately.

Arbor Press A-310, A-330

Bench Press Frame A-258

Press Dimensions (in)															Press Model Number
A	B	C	D	E	F	G	H	J	K	L	M	N	O		
414	280	227	152	134	2¼"-14 un	63	122	19	96	174	65	54	219	A-310	
557	352	260	152	177	3⅝"-12 un	63	139	25	165	203	66	98	276	A-330	
290	203	165	95	73	1½"-16 un	25	50	66	27	121	25	-	-	A-205	
406	282	228	152	82	2¼"-14 un	25	57	64	43	194	29	-	-	A-210	
539	346	304	152	108	3⅝"-12 un	25	69	70	48	213	29	-	-	A-220	
651	476	419	406	146	82	25	114	31	69	35	135	56	67	A-258	
651	476	419	406	146	82	25	114	31	69	35	135	56	67	IPA-1022	
651	476	419	406	146	82	25	114	31	69	35	135	56	67	IPH-1040	