

▼ Shown: LH-102 and TM-5 (in middle)



TM, LH Series

Capacity:

2,000 to 200,000 lbs.

Accuracy, % of full scale:

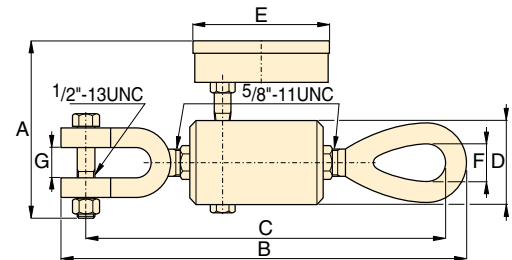
± 2%



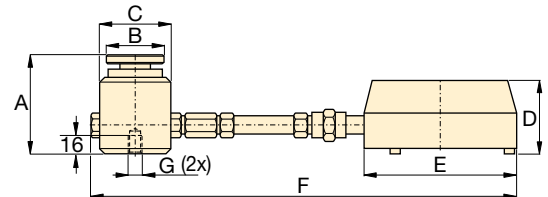
TM and LH models are 100% tested to verify accuracy within a ± 2% range.

If your application requires a calibrated tool, it must be submitted for certification testing.

Certification is NOT available from Enerpac.



TM-5



LH-Series

Tension Meter TM-5

- Accuracy, ± 2% of full scale
- Zinc and bronze plated to resist rust and corrosion
- Dual-range readout in kilograms and pounds
- Cushioned metal case provides safe storage and transport
- Maximum indicating pointer reading for pre-selected forces or to maintain maximum force readings

Load Cells LH Series

- Accuracy, ± 2% of full scale
- Swivel loading pad reduces eccentric loading for improved accuracy
- Maximum indicating pointer reading for pre-selected forces or to maintain maximum force readings
- Dual-range readout in kilograms and pounds

Type	Gauge Capacity		Model Number	Minimum Reading		Gauge Increments		Dimensions (in)						
	(lbs)	(kg)		(lbs)	(kg)	(lbs)	(kg)	A	B	C	D	E	F	G
Direct Mounted	4,500	10,000	TM-5	500	1000	100	100	120	247	236	50	93	22	19
Direct Load Cell Mounted	900	2,000	LH-10	100	200	20	20	77	44	57	60	101	254	¼"-20, 44,5 BC
	4,500	10,000	LH-50	500	1000	100	100	77	44	57	60	101	254	¼"-20, 44,5 BC
Remote Mounted with 2 ft. Hose	900	2,000	LH-102	100	200	20	20	77	44	57	60	147	846	¼"-20, 44,5 BC
	4,500	10,000	LH-502	500	1,000	100	100	77	44	57	60	147	840	¼"-20, 44,5 BC
	9,000	20,000	LH-1002	1,000	2,000	200	200	77	44	57	60	147	840	¼"-20, 44,5 BC
Remote Mounted with 6 ft. Hose	21,000	50,000	LH-2506	2,500	5,000	500	500	101	69	85	60	147	2094	⅜"-24, 63 BC
	45,000	100,000	LH-5006	2,500	5,000	1,000	1,000	132	101	127	60	147	2135	⅜"-24, 89 BC
	90,000	200,000	LH-10006	10,000	20,000	1,000	2,500	158	127	158	60	147	2166	⅜"-24, 102 BC