

ZA4T Air Driven Torque Wrench Pumps

▼ Shown from left to right: ZA4204TX-ER, ZA4204TX-Q



- Features **Z-Class** high-efficiency pump design; higher oil flow and bypass pressure
- Two-speed operation and high by-pass pressure reduces cycle time for improved productivity
- Heat exchanger warms exhaust air to prevent freezing and cools the oil
- Ergonomic pendant allows remote operation up to 20 feet
- Glycerine filled pressure gauge with transparent overlays in Ft.lbs and Nm for Enerpac torque wrenches provide a quick torque reference
- Regulator-Filter-Lubricator with removeable bowls and auto drain is standard



Pump Ratings

-**Q** suffix pumps are for 10,000 psi torque wrenches, and include spin-on couplers.

-**E** suffix pumps are for use with Enerpac SQD and HXD 11,600 psi torque wrenches, and include polarized locking safety couplers.



Twin Torque Wrench Hoses

Use Enerpac THQ-700 series twin hoses with 10,000 psi pumps, or use THC-700 series twin hoses with 11,600 psi pumps.

▼ *Most hydraulic torque wrenches can be powered by the Enerpac ZA4T-Series torque wrench pump.*



10,000 psi	
19.5 feet long, 2 hoses	THQ-706T
39 feet long, 2 hoses	THQ-712T
11,600 psi	
19.5 feet long, 2 hoses	THC-7062
39 feet long, 2 hoses	THC-7122

ZA4T Specifications



ZA4T-Series Pump Applications

The ZA4T-Series pump is best suited to power medium to large size torque wrenches.

Patent-pending **Z-Class** technology provides high by-pass pressures for increased productivity. Its high power to

weight ratio and compact design make it ideal for applications which require easy transport of the pump.

For further application assistance contact your local Enerpac office.

ZA4T Series



Reservoir Capacity:

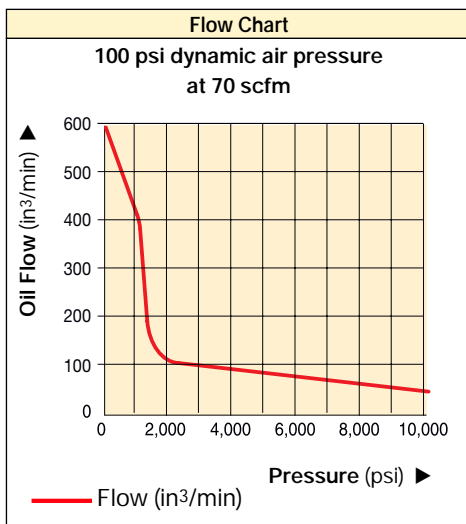
1-2 gal.

Flow at 10,000 psi:

60 in³/min.

Maximum Operating Pressure:

10,000 and 11,600 psi



ATEX Certified

See explanation of ATEX certification in the "Yellow Pages".



103



Torque Wrench Pump Selection Matrix

For optimum speed and performance see the torque wrench, pump and hose selection matrix.

Page: 212



Accessory Options

Available by placing the following additional suffix at the end of the model number:

- K = Skidbar
- M = 4-wrench manifold
- R = Roll cage

▼ SELECTION CHART

For Use With Torque Wrenches		Maximum Operating Pressure (psi)	Model Number ¹⁾	Usable Oil Capacity (gal)	Weight with Oil (lbs)
all models from S-Series	all models from W-series	10,000	ZA4204TX-Q	1.0	92.8
		10,000	ZA4208TX-Q	2.0	103.1
		10,000	ZA4204TX-QR	1.0	100.3
SQD-75-I SQD-100-I SQD-160-I SQD-270-I	HXD-120 HXD-240	11,600	ZA4204TX-E	1.0	92.8
		11,600	ZA4208TX-E	2.0	103.1
		11,600	ZA4204TX-ER	1.0	100.3

1) All models meet CE safety requirements and all CSA requirements.

ZA4T Ordering Matrix and Specifications

▼ This is how a ZA4T-Series pump model number is built up:



1 Product Type

Z = Pump Class

2 Motor Type

A = Air motor

3 Flow Group

4 = 60 in³/min

4 Valve Type

2 = Torque Wrench Valve

5 Reservoir Size (useable capacity)

04 = 1.0 gallon

08 = 2.0 gallons

6 Valve Operation

T = Air operated valve with pendant

7 Voltage

X = Not applicable

8 Factory installed features and options

E = 11,600 psi coupler for use with HXD- and SQD-Series wrenches

Q = 10,000 psi coupler for use with S- and W-Series or other wrenches

K = Skidbar

M = 4-wrench manifold

R = Roll cage



How to order your ZA4T-Series torque wrench pump

Ordering Example 1

Model No. ZA4204TX-EK

11,600 psi pump for use with Enerpac HXD and SQD-Series torque wrenches, 1 gallon reservoir, and skidbar.

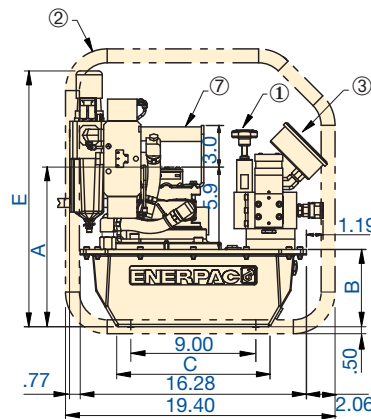
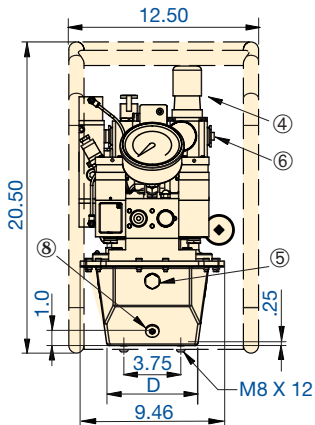
Ordering Example 2

Model No. ZA4208TX-QMR

10,000 psi pump for use with Enerpac S- and W-Series and other 10,000 psi torque wrenches, 2 gallon reservoir, 4-wrench manifold, and roll cage.

Refer to the torque wrench pump selection matrix for optimum wrench, pump and hose combinations.

Dimensions shown in inches.



- ① User adjustable relief valve
- ② Roll bar cage (optional)
- ③ Gauge with overlays
- ④ Filter/lubricator/regulator
- ⑤ Oil level sight gauge
- ⑥ Air input 1/2" NPTF
- ⑦ Standard handle
- ⑧ Oil drain

ZA4T-Series Torque Wrench Pumps

Reservoir Size (useable gallons)	A (in)	B (in)	C (in)	D (in)
1	11.5	5.6	11.0	6.0
2	13.9	8.0	11.3	6.6

ZA4T Performance							
Output Flow Rate (in ³ /min)				Dynamic Air Pressure Range (psi)	Air Consumption (scfm)	Sound Level at 100 psi Dynamic (dBA)	Relief Valve Adjustment Range (psi)
100 psi	700 psi	5,000 psi	10,000 psi				
600	500	80	60	60-100	20-100	80-95	1,400-10,000*

* Pump type (-Q) shown, (-E) range is 1,400 - 11,600 psi

ZA4T Torque Wrench Pump Options



Skidbar

- Provides greater pump stability on soft or uneven surfaces
- Provides two-handed lift

Accessory Kit No. *	Can be used on ZA4T-Series torque wrench pumps
SBZ-4	1 and 2 gallon reservoir

* Add suffix **K** for factory installation. Skidbar weight 4.9 lbs.

Ordering Example :

Model No. ZA4208TX-QK



4-Wrench Manifold

- For simultaneous operation of multiple torque wrenches
- Can be factory installed or ordered separately

Accessory Kit No. *	Can be used on ZA4T-Series torque wrench pumps
ZTM-UE	for 11,600 psi torque wrenches
ZTM-U4Q	for 10,000 psi torque wrenches

* Add suffix **M** for factory installation.

Ordering Example :

Model No. ZA4208TX-QM

ZA4T Series



Reservoir Capacity:

1-2 gal.

Flow at 10,000 psi:

60 in³/min.

Maximum Operating Pressure:

10,000 and 11,600 psi



Gauge Overlay Kit

Gauge overlay kits are also available separately.

GT-4015 includes overlays for all SQD and HXD torque wrenches. **GT-4015-Q** includes overlays for all S- and W-Series torque wrenches.



Roll Bar Cage

- Protects pump
- Provides greater pump stability

Accessory Kit No. *	Can be used on ZA4T-Series torque wrench pumps
VRC-04	1 and 2 gallon reservoir

* Add suffix **R** for factory installation. Roll bar cage weight 7.5 lbs.

Ordering Example :

Model No. ZA4208TX-QR



Twin Torque Wrench Hoses

Use Enerpac THQ-700 series twin hoses with 10,000 psi pumps, or use

THC-700 series twin hoses with 11,600 psi pumps.

10,000 psi	
19.5 feet long, 2 hoses	THQ-706T
39 feet long, 2 hoses	THQ-712T
11,600 psi	
19.5 feet long, 2 hoses	THC-7062
39 feet long, 2 hoses	THC-7122